



**RJ-151403-101 JT GLADIATOR REAR TRAC BAR GEOMETRY CORRECTION BRACKET KIT
INSTALLATION INSTRUCTIONS & TECHNICAL MANUAL**



Thank you for purchasing our Rear Trac Bar Geometry Correction Kit for all years and models of the JT Gladiator! Using basic hand tools, this bracket easily install onto all factory axle housings.

Kit Includes

- 1) RJ-151403-1.....Rear Trac Bar Geometry Correction Bracket
- 1) RJ-501102-1.....14mm-1.5 x 80mm Long Bolt
- 2) CE-H0014......535" I.D. Flat Washer
- 1) RJ-502102-1.....14mm-1.5 Stover Nut
- 1) RJ-511201-1.....3/8" -16 U-Bolt
- 2) CE-90108A415.....3/8" Flat Washer
- 2) CE-98233A300.....3/8" Serrated Flange Nut
- 1) CE-92865A215.....3/8"-24 x 1" Long Bolt
- 1) CE-92501A430.....3/8"-24 Stover Nut

Tools Required

- 9/16" Combination Wrench (Preferably Ratcheting)
- 21mm Socket (1/2" Drive)
- 21mm Combination Wrench
- 22mm Socket (1/2" Drive)
- 22mm Combination Wrench
- 1/2" Drive Ratchet and/or 1/2" impact wrench
- Torque Wrench
- Mallet
- Ratchet Strap

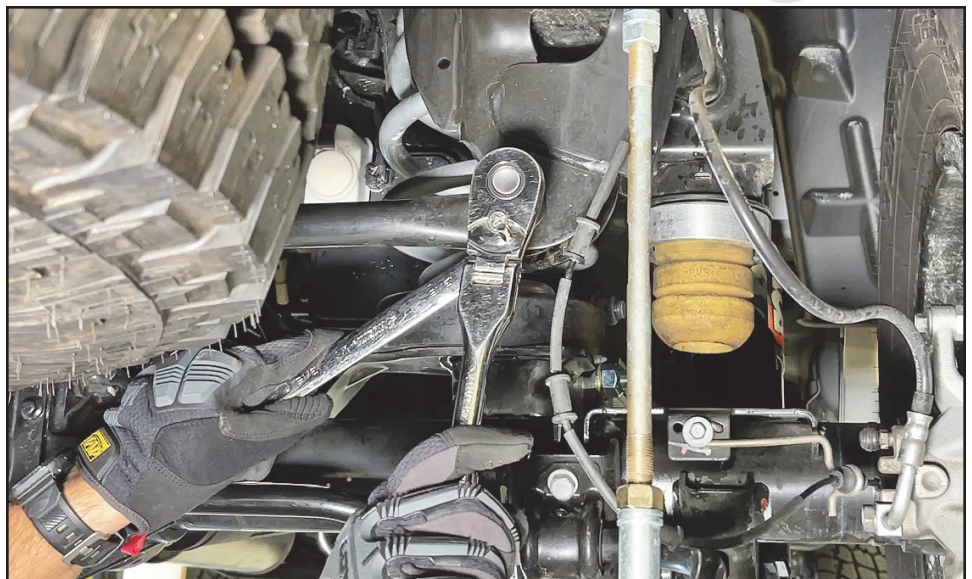
Torque Specs.

- Top bolt on new bracket (factory bolt).....155 ft. lbs.
- Lower bolt on new bracket (new bolt).....100 ft. lbs.
- Factory frame bolt.....90 ft. lbs.



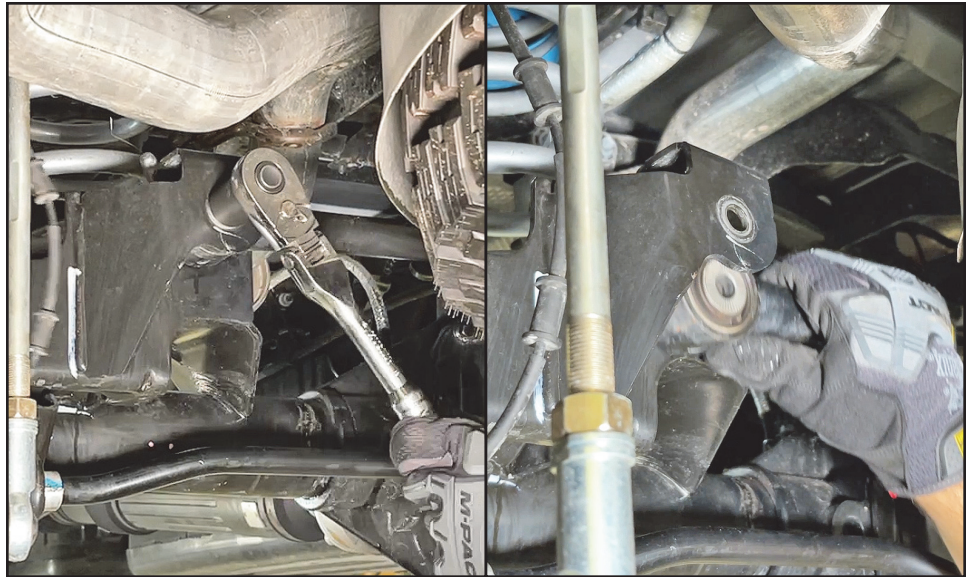
Step 1

With a ratchet & socket on the front side, and a wrench on the back side, loosen the rear trac bar frame bolt until it is finger tight, but do not remove it.



Step 2

With the same ratchet and socket (this side has a flag nut on the back, so no need for the wrench), remove the rear trac bar axle bolt. Once the bolt is removed, go ahead and drop the trac bar down out of the bracket. Retain the bolt and the flag nut for reuse later.

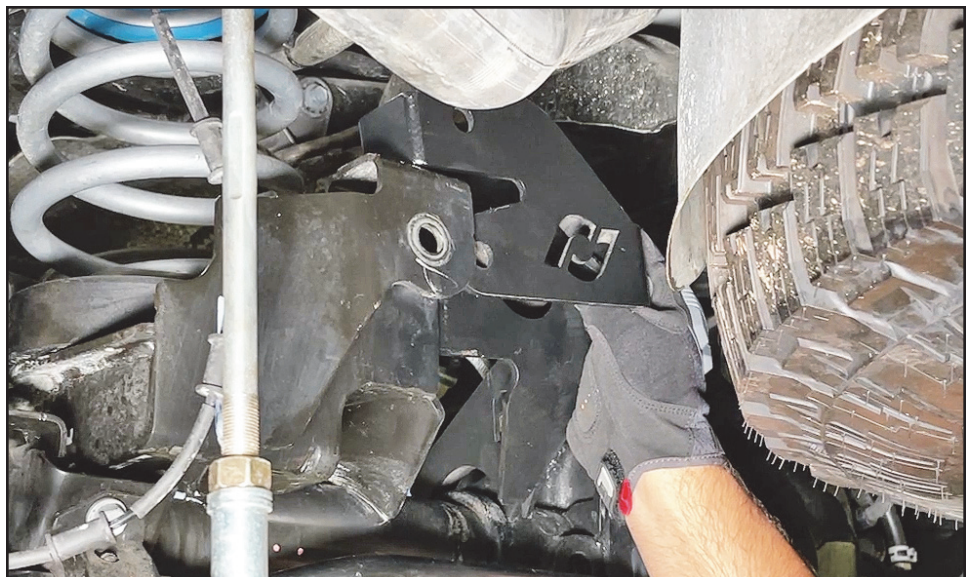


Step 3

You may now go back to the frame end of the trac bar, remove it's bolt and nut, and remove the trac bar from the vehicle entirely. Retain the trac bar, the bolt and the nut for reuse later.

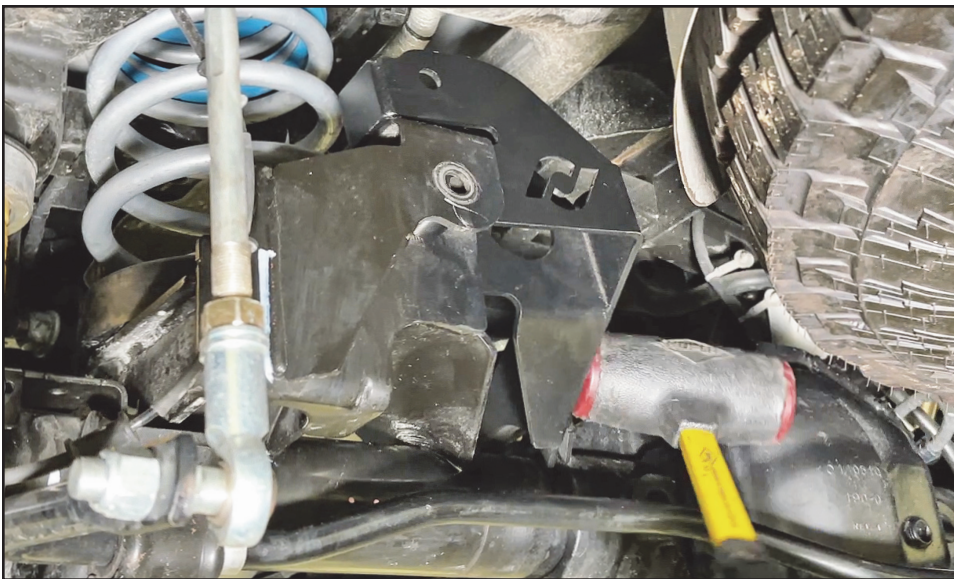
Step 4

Position the new bracket into place to understand how it fits.



Step 5

Note that the 2 arms of the new bracket go behind both flat surfaces of the existing, factory axle bracket.



Step 6

Go ahead and insert the bracket into position. Due to variances in factory axle housings, in some cases this may require the use of a mallet.

Step 7

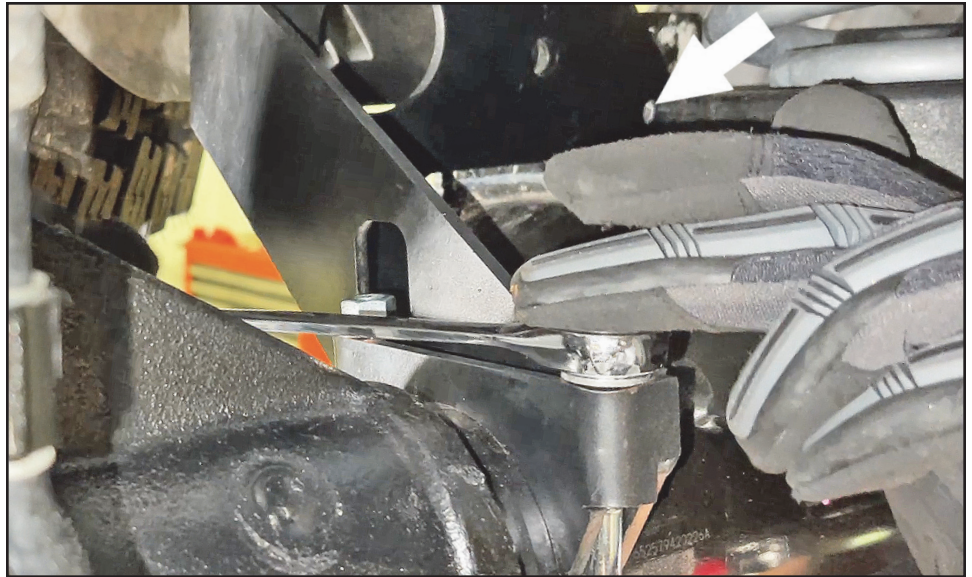
Insert the bracket retaining u-bolt that is included in the kit as shown.



Step 8

Install the 3/8" serrated, flanged nuts onto the u-bolt threads that protrude thru the top of the bracket. Snug them up, but not so tight that the bracket can't move.

Additionally, you'll note the white arrow in the top right of the photo. There is an additional hole and an additional bolt and nut and washer to go in this hole included in the kit. This hole/bolt is optional. As you can see, on an fully assembled vehicle - installing this bolt would be no easy task, as the bolt's hole must be drilled. If this bracket was being installed at the same time lift was being installed, you'd have easy access to drill this hole (with a 3/8" drill bit).



Step 9

Install the a flat washer onto the new 14mm bolt and install it from the outside, thru both layers of the factory bracket and the new bracket until it protrudes out the back. Install the other flat washer and stover nut onto the threads from the back side.

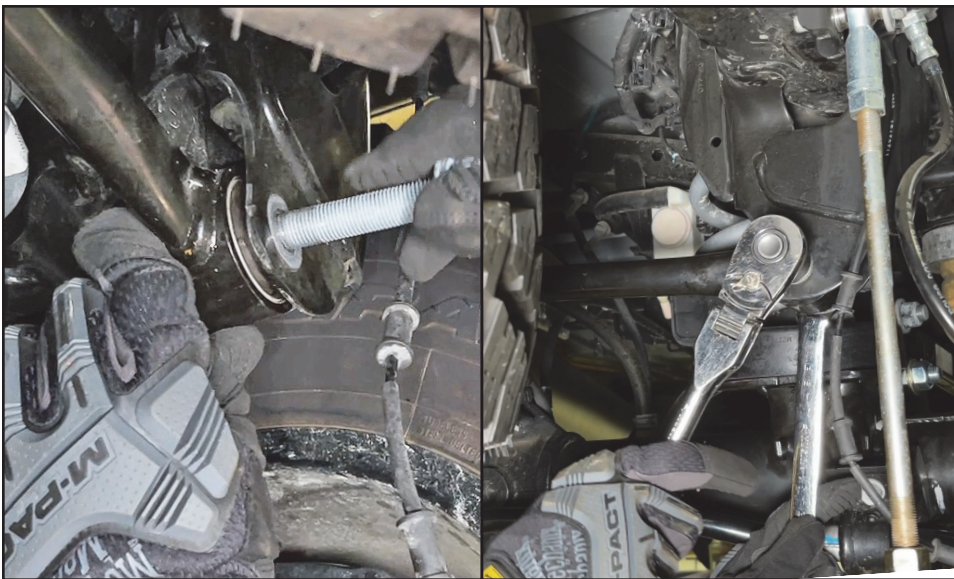
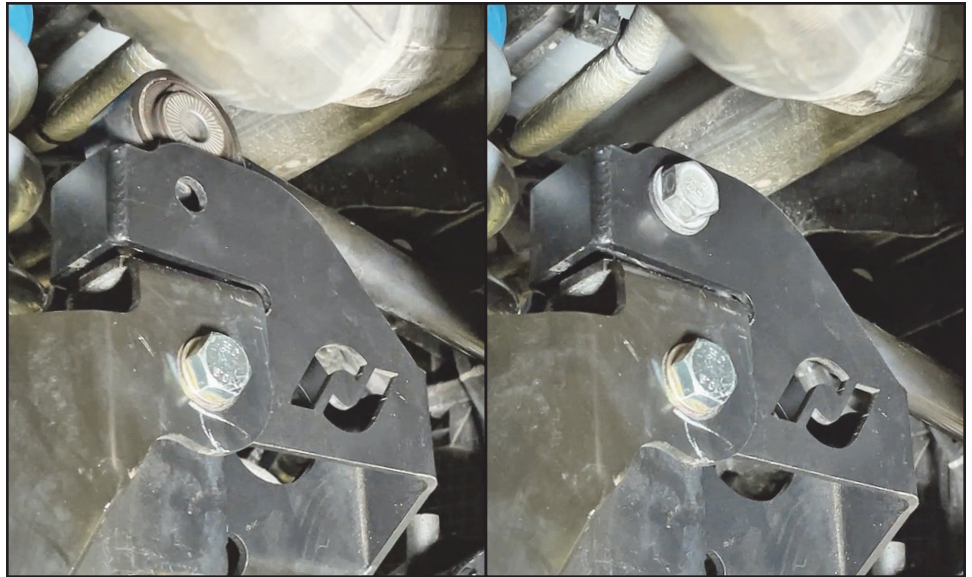
Step 10

Tighten the new bolt with a ratchet and socket and a wrench on the back side.



Step 11

Position the rear trac bar back into the vehicle and insert it into the top of the new bracket. Install it's factory bolt and flag nut.



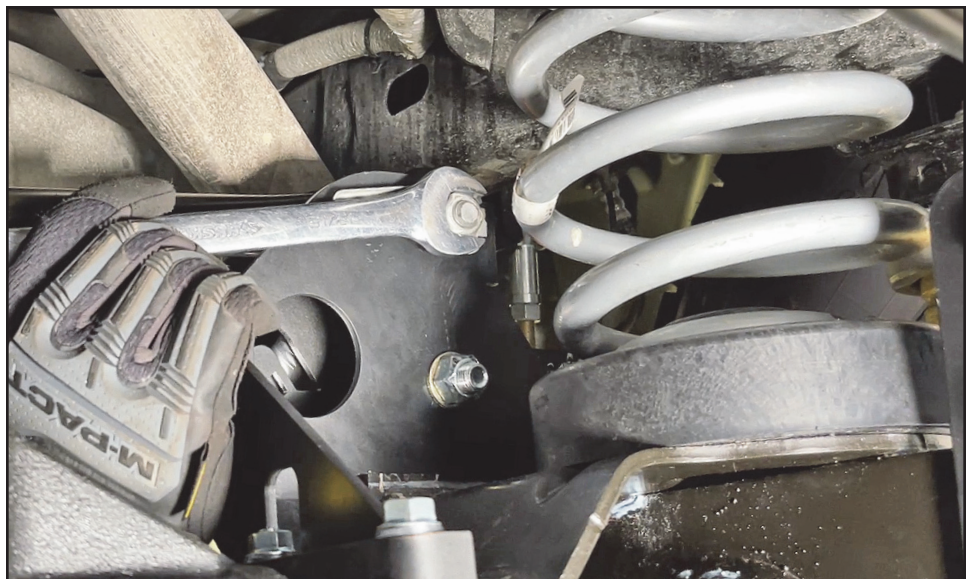
Step 12

Reinstall the frame end of the trac bar back into the factory frame bracket using it's factory bolt and nut.

If this hole no long lines up, because the vehicle shifted while the trac bar was removed, you can simply have a friend push on the side of the vehicle from the proper direction to line the hole up, or you can use a ratchet strap from the axle to the frame and pull it over to where you need it to be.

Step 13

On the axle end of the trac bar, you'll need to hold the flag nut with a wrench from the back side because it no longer has anything to lock against. Use a ratchet and socket from the face side of the bracket.



Step 14

Go back and final tighten the bracket u-bolt nuts.



Step 15

Now go back and torque all 3 bolts - the 2 on the axle side and the one at the frame on the passenger's side.