



**RJ-641100-101 JL WRANGLER & JT GLADIATOR WINCH MOUNTING PLATE
(STEEL BUMPER) INSTALLATION INSTRUCTIONS & TECHNICAL MANUAL**



Lets Begin!

Note, this kit is for use on vehicles with the factory steel bumper only! Start by opening all of the packages inside the kit box and take an inventory of all components and hardware per the Parts List below. PLEASE read this entire instruction manual before beginning!

Parts List	Required Tools	Optional Equipment Shown
1) RJ-641100-1.....Winch Mount Base Plate	3/8" Ratchet	Warn Winch
1) RJ-641100-3.....LH Frame Bracket	3/8" Impact Wrench (optional)	Factor 55 Hawse Fairlead
1) RJ-641100-4.....RH Frame Bracket	Various 3/8" Extensions	Factor 55 UltraHook
1) RJ-641100-5.....Fairlead Backing Plate	13mm Wrench and Socket	RockJock Towing Kit
2) RJ-501203-3.....1/2"-13 x 1 1/4" Long Hex Bolt	16mm Wrench and Socket	
2) CE-H0014.....1/2" Flat Washer	18mm Deep Socket	
2) RJ-502205-1.....1/2"-13 Flanged Lock Nut	T-45 Torx Bit	
5) RJ-85985K68.....Locking Panel Plugs	Small Flat Screwdriver	
	Large Pointed Punch	
	Masking Tape	



Step 1

We'll begin by popping the 2 plastic rivets out, one on each side, that retain the plastic filler panel to the front frame horns. A small flat screwdriver makes this pretty easy.



Step 2

Remove the plastic filler panel. You may discard the panel and it's rivets.

Step 3

On the passenger's side, disconnect the bumper wiring harness plug. Be careful not to break the clipping mechanism that holds it together.



Step 4

With a 13mm wrench or socket, remove all of the bolts that retain the factory steel "chin panel" under the front bumper. Be careful to support it as it is fairly heavy.



Step 5

Remove the panel and set it aside. Retain the panel and it's hardware for reuse.

Step 6

Next, with a T-45 torx bit, remove the 5 screws that attach the winch filler panel to the top of the bumper.



Step 7

Remove the panel.

You may discard the panel and it's hardware.



Step 8

Starting with the insides of the frame rails, use a 16mm wrench or socket to remove the bolts that attach the bumper brackets to the frame rails.

Do this on both sides.

Retain the bolts for reuse.

Step 9

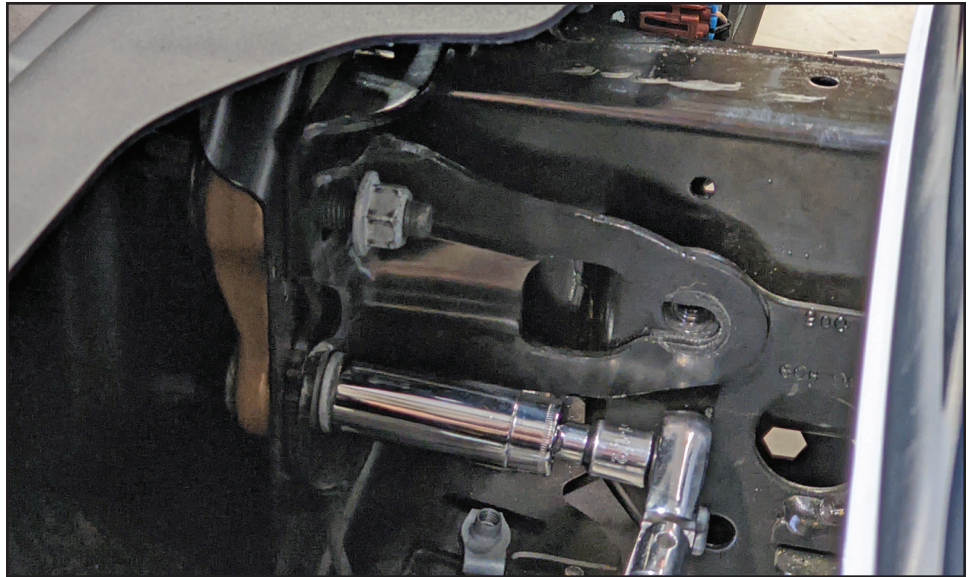
Now do the same thing on both sides on the outsides of the frame rails.

Retain the bolts for reuse.



Step 10

Moving on, back to the insides of the frame rails, remove the bumper attaching nuts with an 18mm deep socket. Retain the nuts for reuse.



Step 11

When these nuts come off, so will the bumper brackets. You may discard these brackets.

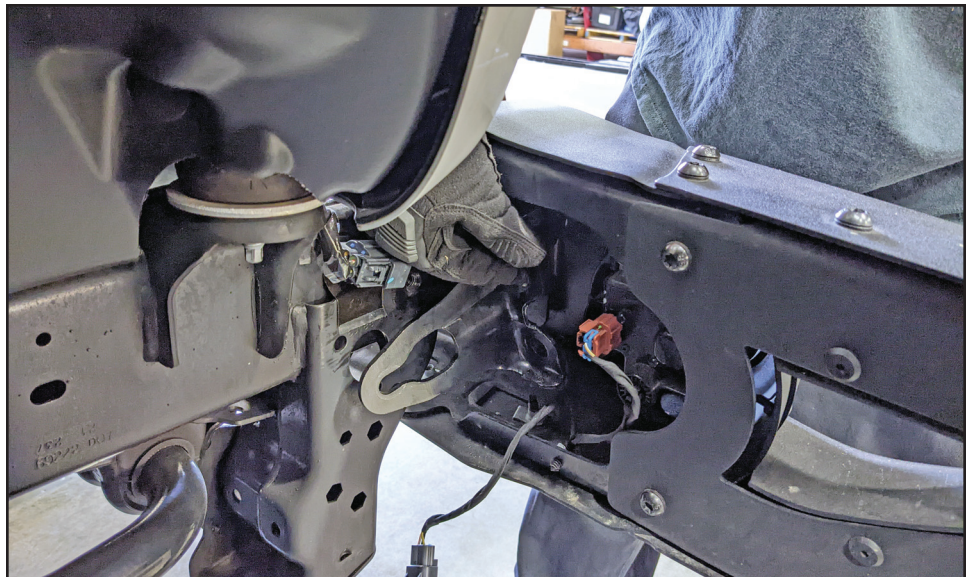
Step 12

Now you may remove the 2 outer bumper attaching nuts per side, again, with an 18mm deep socket. Retain these nuts for reuse.



Step 13

Again, when these nuts come off, so will the bumper brackets.
On the outside, you will need to the brackets for reuse.



Step 14

You may now remove the bumper and set it aside.

Step 15

Next, locate the new frame brackets included in the Winch Plate Kit and fit them into insides of the frame rails, right and left, as shown.



Step 16

Attach them to the frame with the factory bolts that were removed from these holes with a 16mm wrench or socket.
Do not tighten the bolts! Just snug for now.

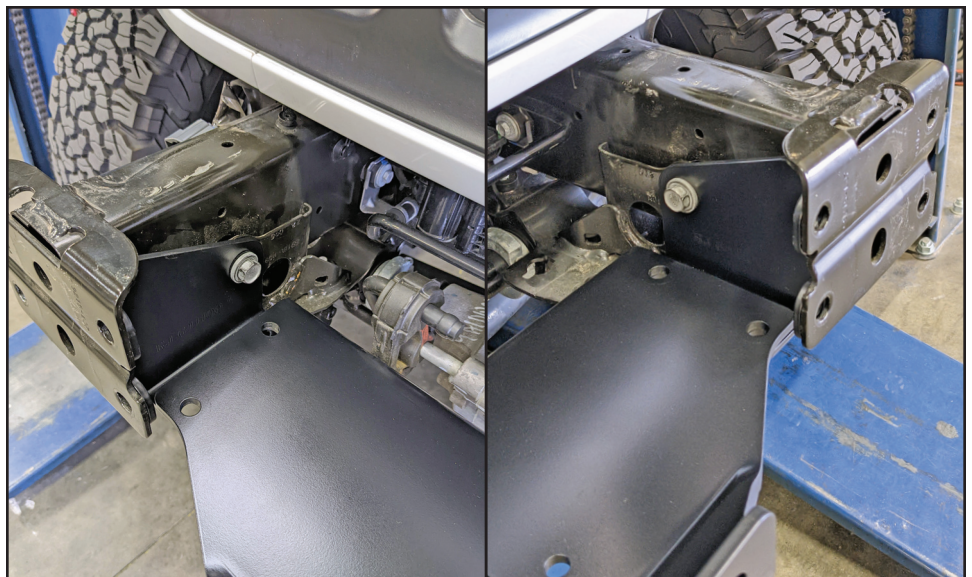


Step 17

Fit the new Winch Plate into place.

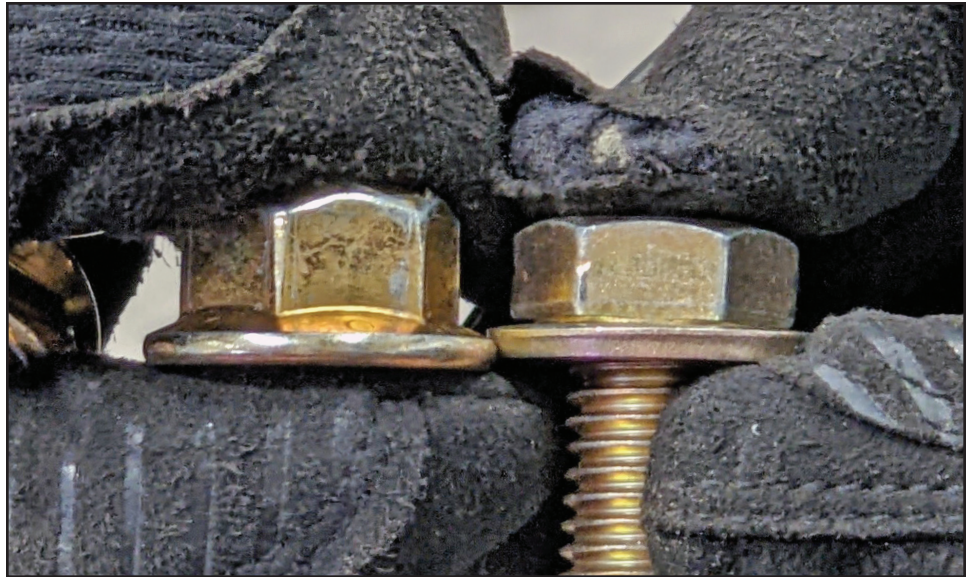
Step 18

The Winch Plate sits on top of the recently installed frame brackets, as shown.



Step 19

Being that this is all a very tight fit, you need to be mindful of the Winch Plate attaching hardware's orientation. As you can see, the nut is taller than the bolt head & washer combo. You want to make sure to put the bolt head & washer on top and the nut on the bottom (from underneath), because you need every little bit of space you can get!

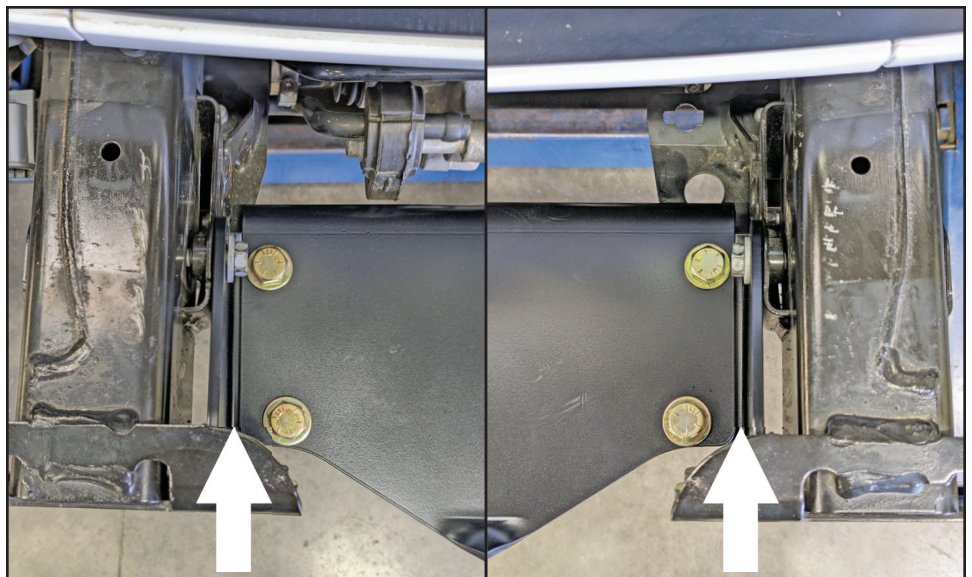


Step 20

Install all 4 bolts, washers & nuts, but do not tighten.

Step 21

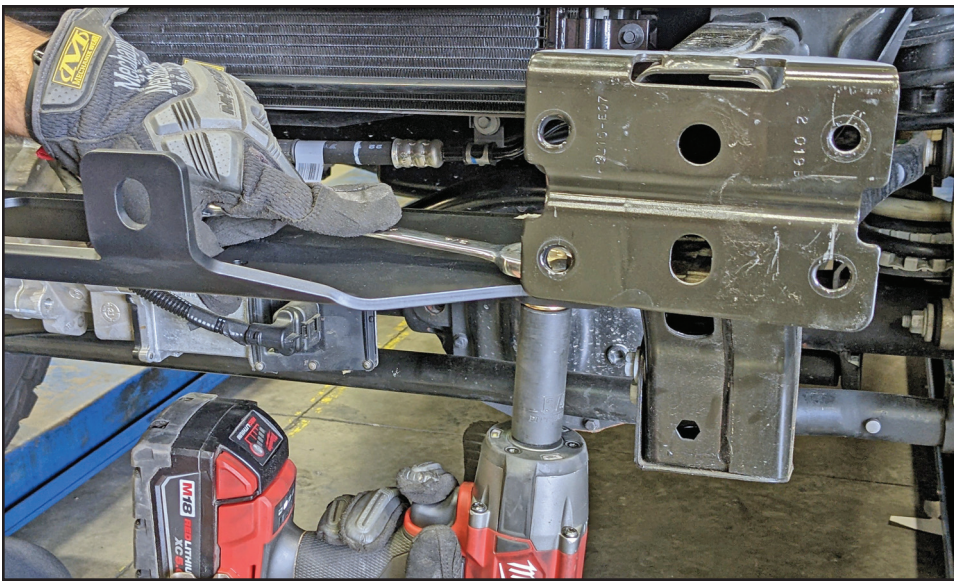
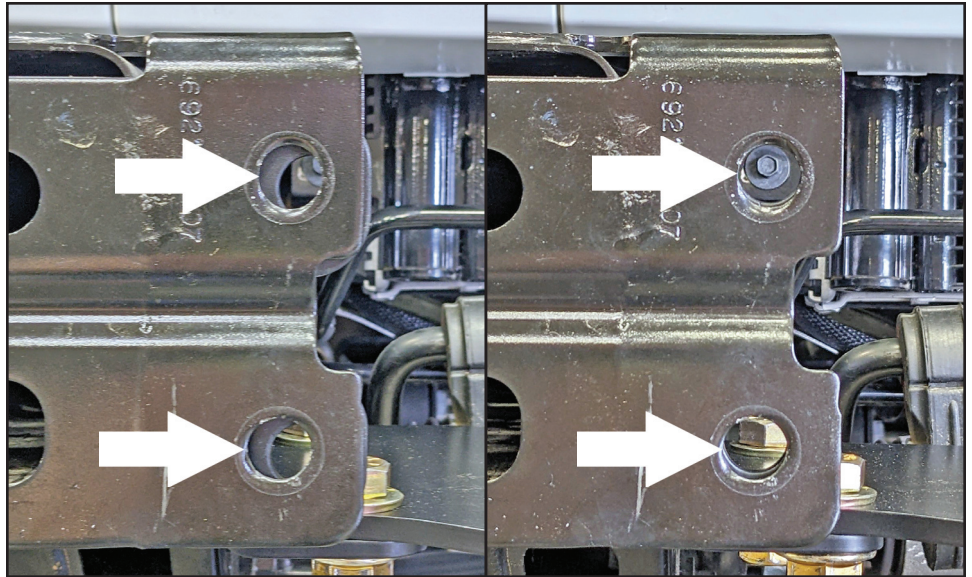
You need to make sure to carefully center the Winch Plate between the 2 frame brackets.



Step 22

Next, before final tightening the frame or Winch Plate bolts, you'll need to ensure that your bumper mounting holes in the frame and the new frame brackets are lined up.

If they are not - adjust until they are.



Step 23

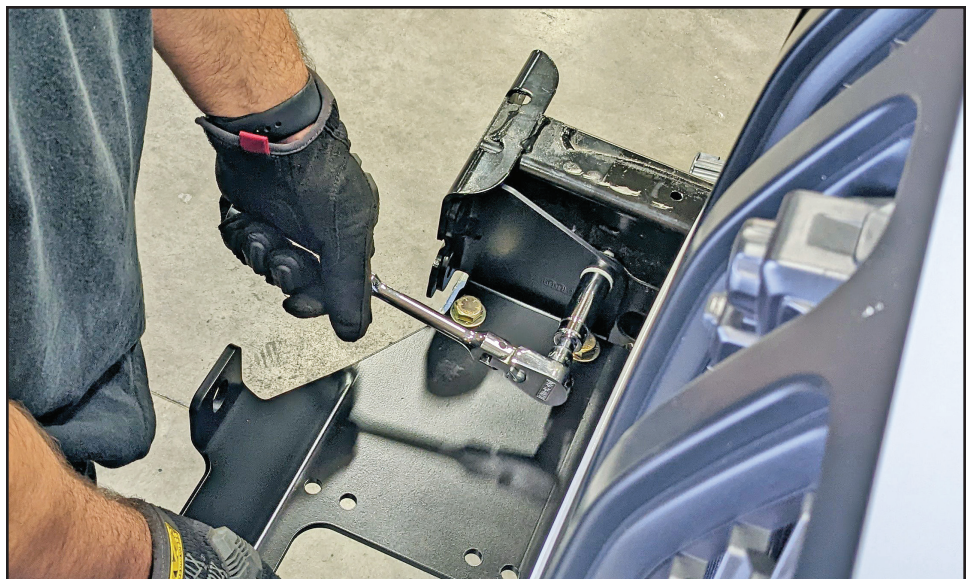
With everything aligned, you may proceed to tighten the 4 Winch Plate bolts with a 3/4" wrench & socket.

However, take your time and keep an eye on your spacing and alignment at all times.

Step 24

Now go back and tighten both of the frame bolts with a 16mm wrench or socket.

Again, keep an eye on the alignment of the bumper holes.



Step 25

Next you'll want to tape up your winch to prevent damage and scratching - to the winch, and to your Jeep.

This step is optional and the tape is hard to get off afterward, but, c'mon, your winch is expensive and your Jeep is expensive!



Step 26

Now you may go ahead and carefully set the winch down between the frame rails and onto the new Winch Plate.

Step 27

Over to your bumper, you'll want to find all of the clips that attach the plastic fairlead mount block off plate to the bumper and unclip and free them.



Step 28

Remove the panel from the bumper and discard it.



Step 29

You may now reinstall your bumper. Put the **lower** nuts on the **outboard** sides of the frame rail on, just a few threads, so the bumper does not fall off.

Step 30

Pull your winch cable thru the cable slot in the bumper.

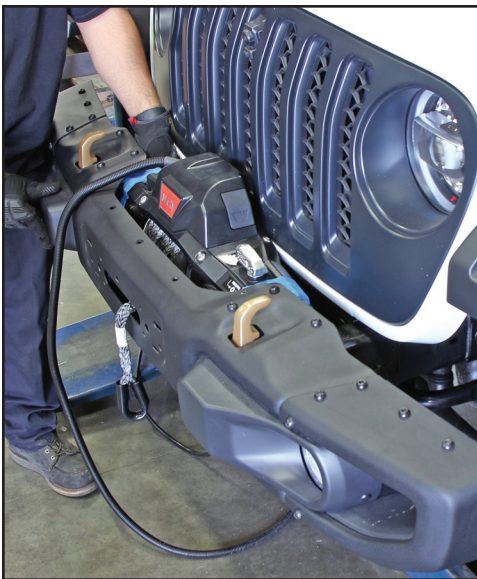


Step 31

Route your winch cables safely thru the available holes behind the winch.

This will vary per winch/winch manufacturer.

Make sure to consult the instruction manual included with your winch before deciding upon this routing.



Step 32

Being that you left the bumper attached loosely by the bottom 2 outside nuts, this should allow you to wiggle the bumper outward and tip the top of it down slightly to gain some access to install additional hardware.

Once you have done this, you should also have some room to push the winch to the side a bit to gain even a little more room.

Step 33

It's tight, but you'll now reach down into the slot between the end of the winch and the new frame bracket to install the bottom bumper nut (on whichever side you choose to do first), and then install the upper nut.

Finger tight on both is all you want right now.

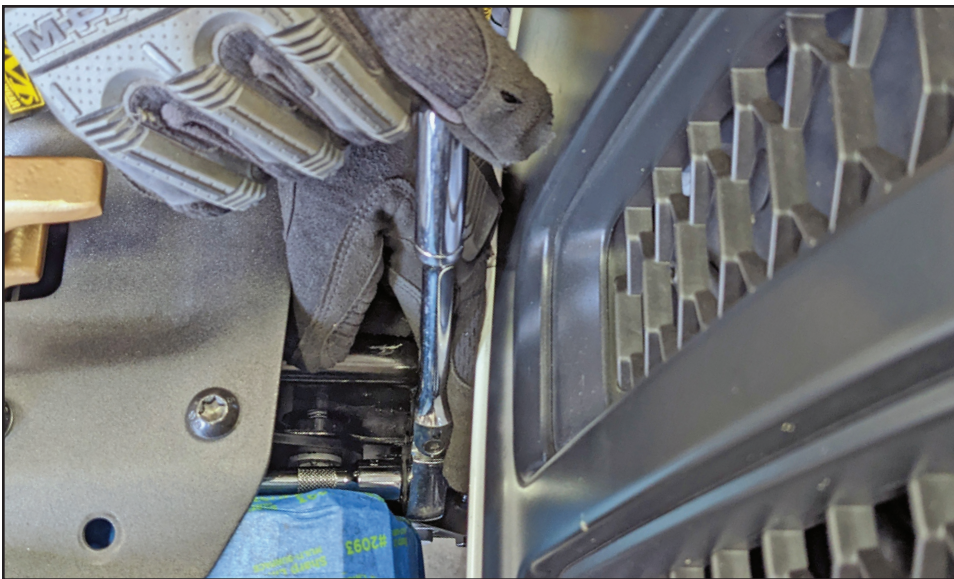


Step 34

Move to the other side.

Just like you did on the other side, you'll want to pull the bumper out and tip it as far as your loosely mounted outer nut will allow and push the winch toward the other side as far as you can to gain some space.

Install the bottom nut and then the top nut.



Step 35

With an 18mm wrench you may fully tighten the lower and then the top nuts on one side.

Due to the tight clearances on the hardware of the lower nut, this is often only achievable with a standard (non-impact style) 3/8" drive deep 18mm socket.

Step 36

Repeat the tightening process of the lower and then the upper nut on the other side.



Step 37

You may now go back and remove the 2 lower, outboard bumper nuts that you had installed initially to keep the bumper from falling off.



Step 38

Reinstall the outboard frame bracket bolts that you saved, loosely, into the side of the frame rail. Install the factory bumper brackets onto the bumper studs and onto the loose frame rail bolt. You can snug the frame rail bolt, but leave it loose enough that the bracket can still move around.

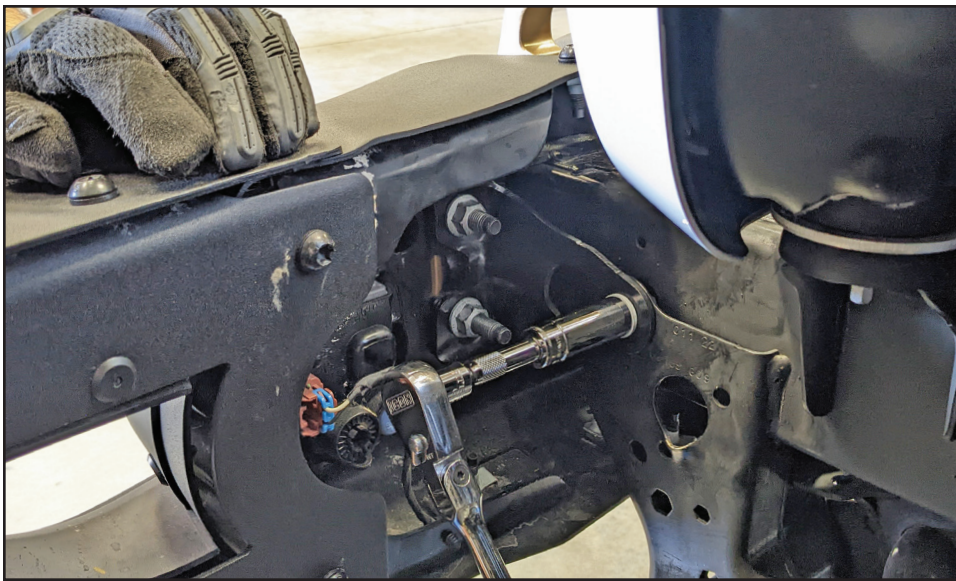
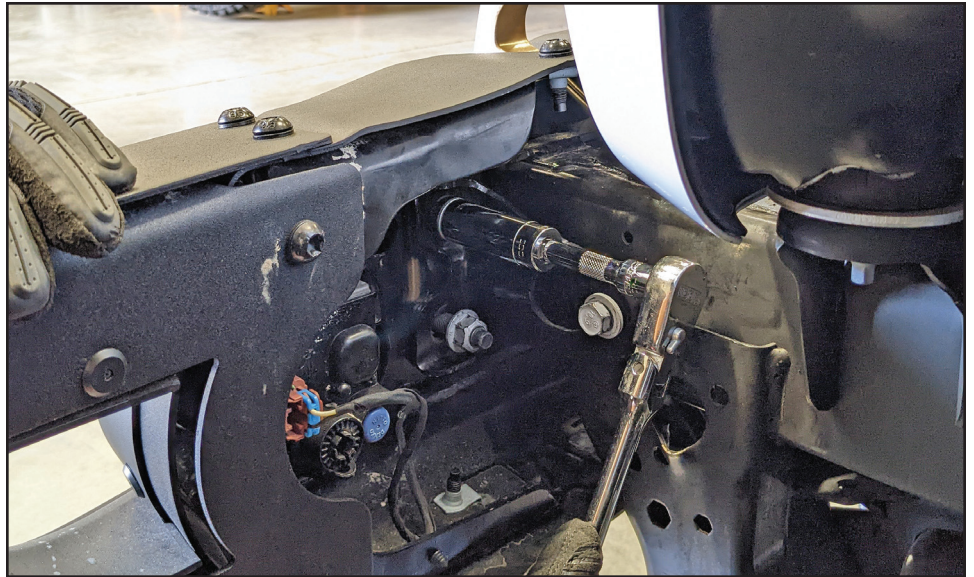
Step 39

Go ahead and install the lower bumper nut, and then the upper nut.



Step 40

Now go ahead and fully tighten the bolt bumper nuts with an 18mm deep socket.



Step 41

You may now fully tighten the frame rail bolts with a 16mm wrench or socket.

Step 42

On the passenger's side, go ahead and plug your bumper wiring harness plug back in.

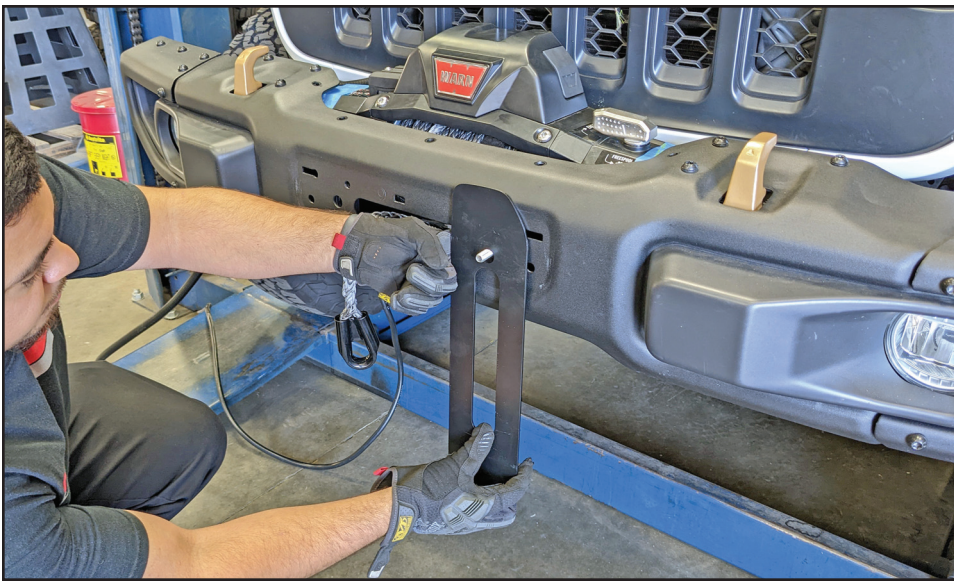
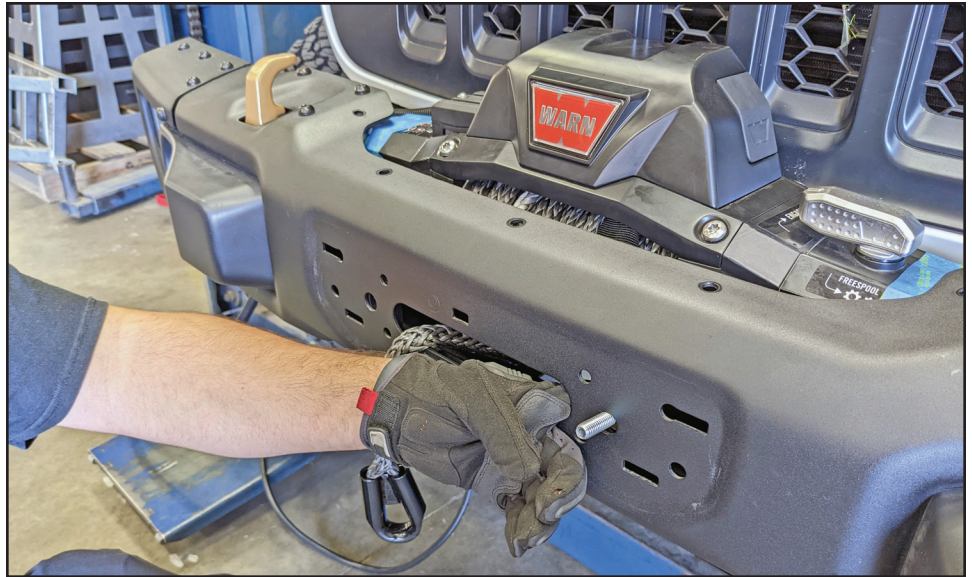


Step 43

At this point you'll begin the process of installing the fairlead of your choice.

For illustration purposes, we'll be installing a Factor 55 Hawse Fairlead.

This fairlead kit includes hardware, so we'll begin by installing one of the bolts thru the winch cable slot in the front of the bumper as shown.



Step 44

Next install the new fairlead backing plate that is included in the Winch Plate Kit onto the bolt.

Be mindful of the shape of this plate so that it lines up in the relief in the bumper properly.

Step 45

Next, fit the fairlead onto the bolt and then start a nut onto the bolt, finger tight, to hold it on.



Step 46

Raise the fairlead backing plate and the fairlead up and push your winch cable thru the back of it and pull it thru the front, as shown.



Step 47

Insert the other fairlead bolt thru the cable slot, push it thru the bumper, fairlead backing plate and the fairlead and put the nut on it, finger tight.

Step 48

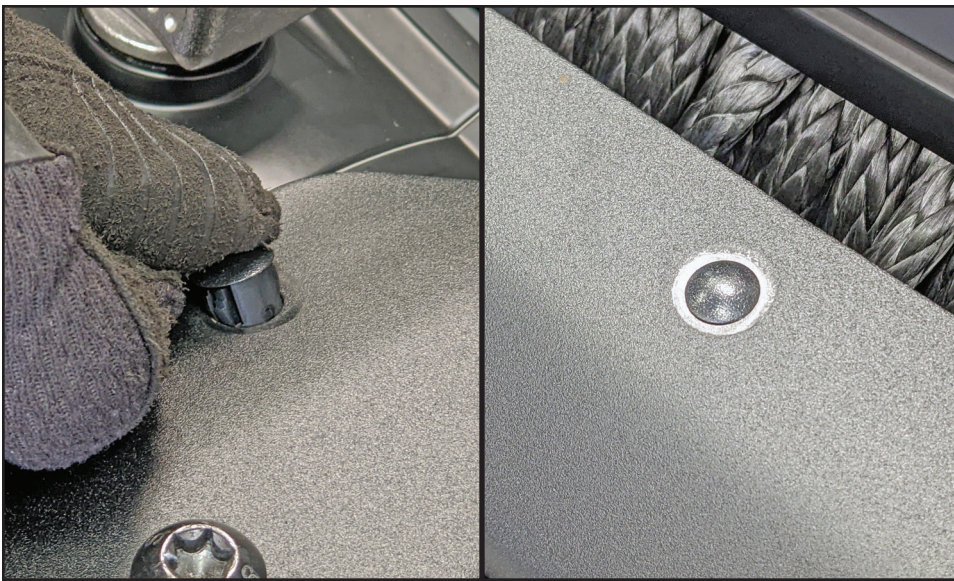
This step is very important. You'll need to examine the 3 layers of metal you are dealing with here: the sharp edge of the steel bumper, the edge of the fairlead backing plate, and the smooth fairlead.

You want to wiggle all of these 3 layers around to keep your winch cable riding on the fairlead and not the steel edges of the fairlead backing plate or the bumper.



Step 49

Once you are satisfied with your cable's safe contact with the fairlead mount, go ahead and tighten down the fairlead mount nuts.



Step 50

In this Winch Plate Kit, you will find 5 plastic plugs to fill the 5 holes on the top of your bumper where the winch plate block off plate screws were.

Step 51

The 5 plugs installed will look like this and make for a clean finish of the kit install. Also, you may go ahead and remove the masking tape that was protecting your winch at this time.

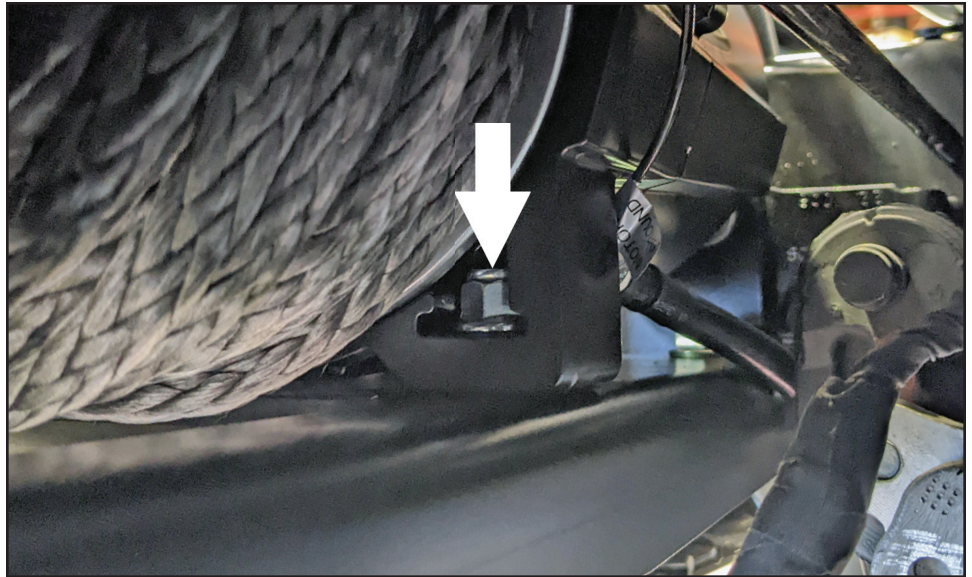


Step 52

Next, we'll go back and bolt the winch down tight to the Winch Plate.

Winch mounting hardware situations vary from winch to winch and manufacturer to manufacturer.

The Warn winch we are installing in this illustration has us install nuts, supplied with the winch, into the "feet" of the winch at this time.

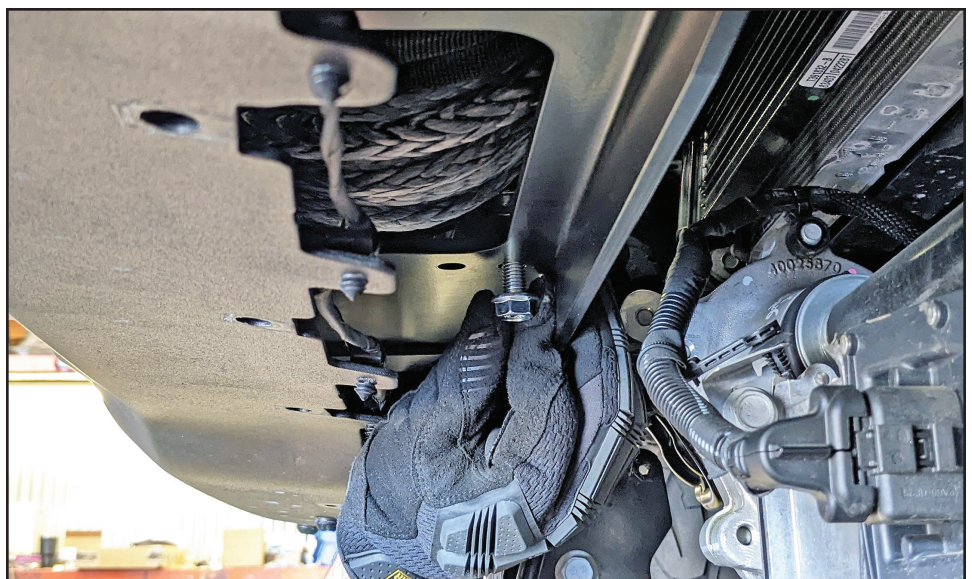


Step 53

Starting with the rearward bolt holes, and using a large pointed punch, we'll align the bolt hole in the Winch Plate with the nut in the winch foot.

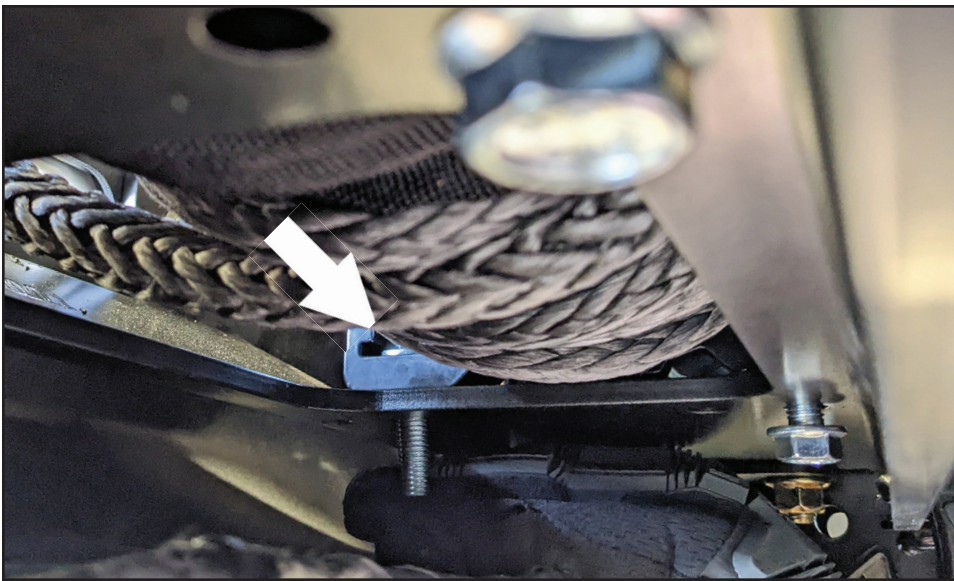
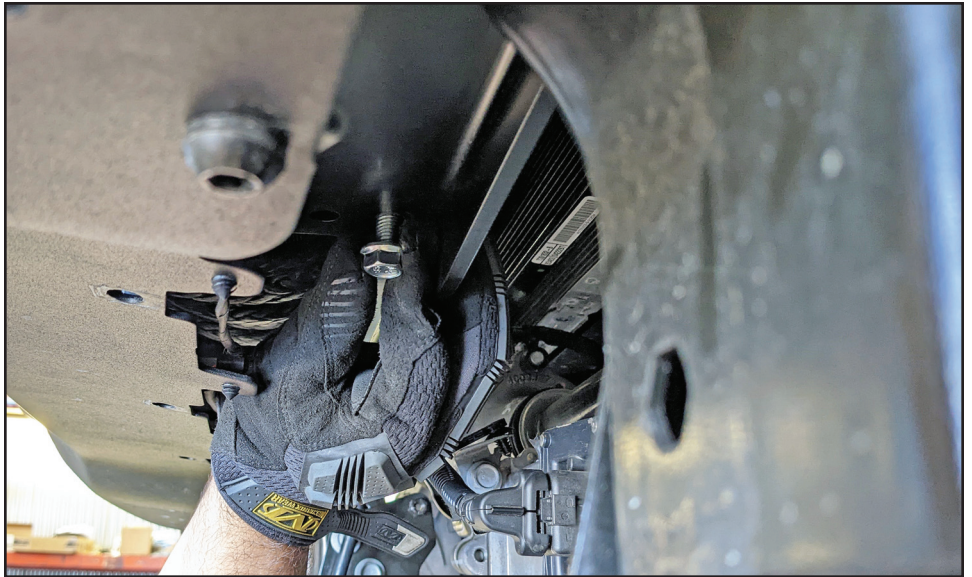
Step 54

Insert the bolt, supplied with the winch, and thread it in by hand.



Step 55

Repeat this process for the other rearward bolt.



Step 56

Now we'll move on to the front bolts. The process is the same, nuts in the feet of the winch and insert the bolts from the bottom.

Step 57

You may now go back and tighten all 4 winch bolts.



Step 58

The winch and hardware in our illustration required a wrench to reach the forward bolts.



Step 59

Now we'll go ahead and reinstall the factory "chin panel".

Step 60

Reinstall all factory "chin panel" hardware with a 13mm wrench or socket.



Step 61

At this point we'll be installing a Factor 55 Ultra-Hook onto the end of our winch cable. Whatever you decide to install onto the end of your cable - just follow the manufacturer's instructions for the component.



Step 62

Per the winch manufacturer's instructions, we are finishing up the winch power lead cable routing and connecting our winch.

Step 63

With the winch wired up, we were able to retract our cable and call this install done!





NOTE:

If you're looking to install a Towing Kit at the same time as this Winch Plate, take a look at our CE-9033JLS Towing Kit! The 2 were made to work together! Just follow the Towing Kit's instruction manual.

FOUND!

In the grille of our JL upon starting this install!

