



**RJ-441108-101, JK-9703SB & JK-9704SB JEEP JL/JT/JK STEERING STABILIZER SHOCK BRACKET KITS - INSTALLATION INSTRUCTIONS & TECHNICAL MANUAL**

Thank you for purchasing our Correctlync® heavy duty steering stabilizer shock bracket for your Jeep JL Wrangler, JT Gladiator or JK Wrangler! Using basic hand tools, these brackets easily install and include the necessary hardware for reattaching your steering stabilizer shock after a steering upgrade.

**Kits covered in this instruction manual**

**Tools Required**

- RJ-441108-101.....Steering Stabilizer Shock Bracket Kit for 40mm-42mm tie rod tubes and stock JL/JT shock (only)
- JK-9703SB.....Steering Stabilizer Shock Bracket Kit for 1 5/8" tie rod tubes
- JK-9704SB.....Steering Stabilizer Shock Bracket Kit for 1 1/2" tie rod tubes

- Basic SAE and Metric Hand Tools
- Tape Measure
- Torque Wrench

**Kits Include**

**RJ-441108-101 Kit**

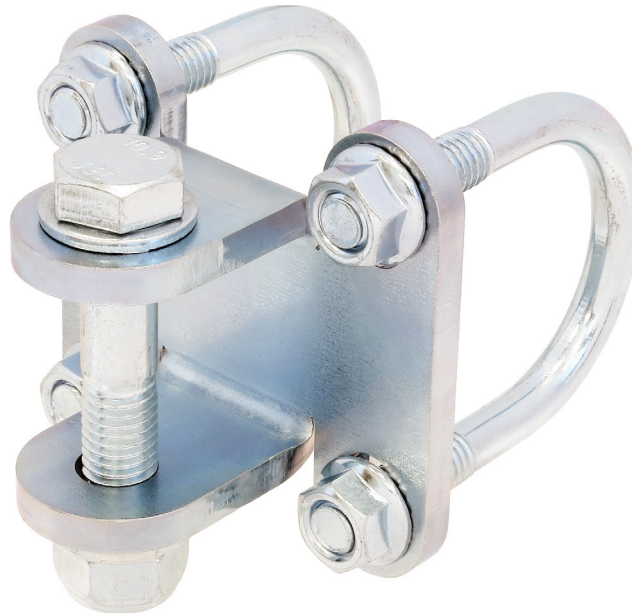
- (1) RJ-441108-1.....Bracket (Stock JL/JT Shock Only)
- (1) CE-95327A692.....12mm-1.75 x 65mm Long Bolt
- (2) CE-91455A150.....12mm Flat Washer
- (1) CE-90576A119.....12mm-1.75 Nyloc Nut
- (2) CE-H0005.....U-Bolt - 1 3/4" I.D.
- (4) CE-98233A300.....3/8" - 16 Serrated Flange Nut

**JK-9703SB Kit**

- (1) JK-9703SB1.....Bracket
- (1) CE-95327A692.....12mm-1.75 x 65mm Long Bolt
- (2) CE-91455A150.....12mm Flat Washer
- (1) CE-90576A119.....12mm-1.75 Nyloc Nut
- (2) CE-H0005.....U-Bolt - 1 3/4" I.D.
- (4) CE-98233A300.....3/8" - 16 Serrated Flange Nut

**JK-9704SB Kit**

- (1) JK-9703SB1.....Bracket
- (1) CE-95327A692.....12mm-1.75 x 65mm Long Bolt
- (2) CE-91455A150.....12mm Flat Washer
- (1) CE-90576A119.....12mm-1.75 Nyloc Nut
- (2) CE-H0005.....U-Bolt - 1 1/2" I.D.
- (4) CE-98233A300.....3/8" - 16 Serrated Flange Nut

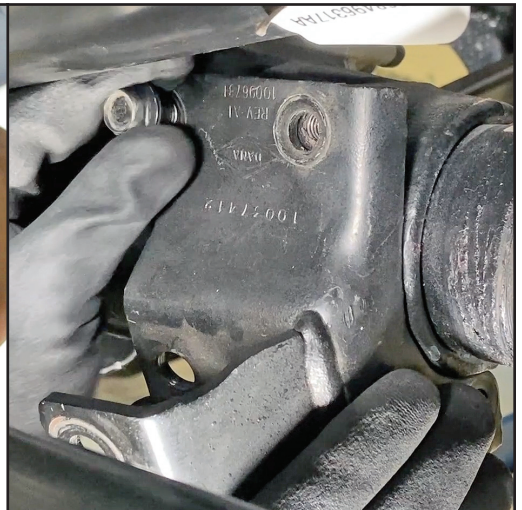


**Step 1**

On a JK, remove the end of the steering stabilizer shock from it's stud on the bracket on the factory tie rod.

On a JL/JT, remove the end of the steering stabilizer shock from the bracket on the axle housing, and then remove the bracket from the axle housing.

In a JL/JT application, installing this tie rod mounted shock bracket will require a bracket such as our RJ-441102-101 bracket to move the wheel end mount of the shock from the tie rod to the axle housing.



@RockJock4x4

/RockJock4x4

/RockJock4x4byJohnCurrie



1592 Jenks Dr.  
Corona, Ca. 92878  
(714) 367-1580

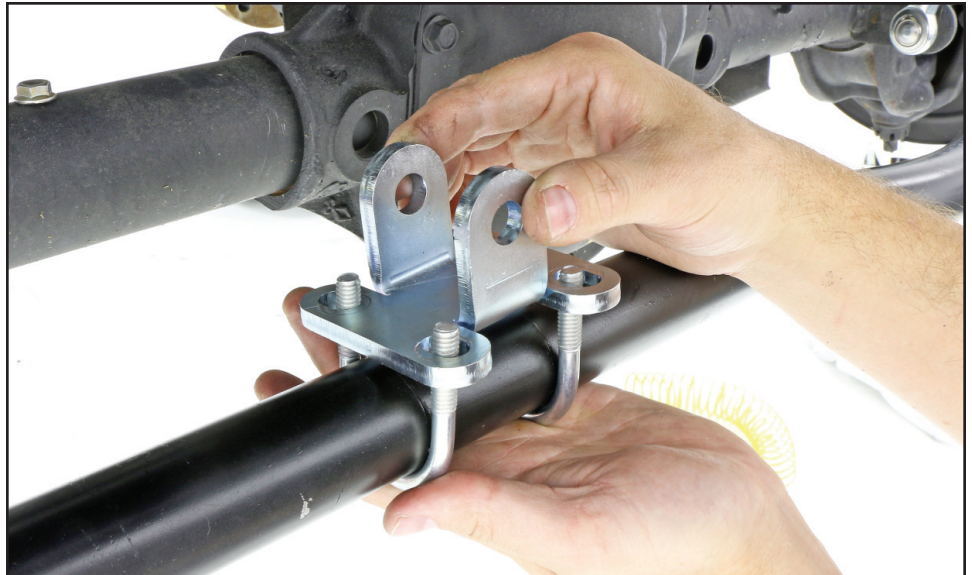


## Step 2

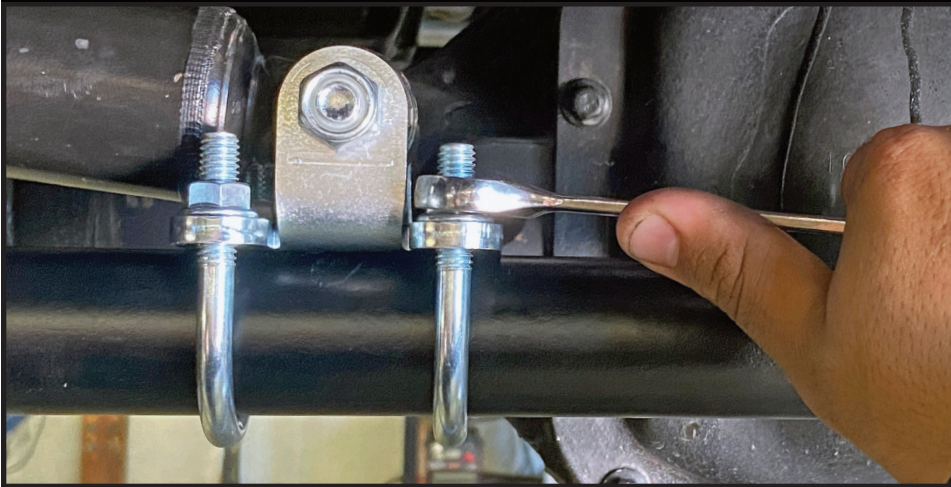
Assemble the new steering stabilizer bracket kit onto the tie rod as shown. Simply put the u-bolts around the tie rod, drop the bracket onto them, install the 4 u-bolt nuts and snug them up for now.

Fit the end of your stabilizer shock into the new bracket and install the new shock bolt from the back side of the bracket (nut on the front).

Adjust the location of the bracket to attain proper shock stroke per the Tech Tip below.



## TECH TIP



### Stabilizer Shock Length Adjustment

With the new steering stabilizer shock bracket installed onto the tie rod, but not tightened down, affix the end of the shock to the bracket. To adjust the shock properly, turn the wheels all the way to the right, to the lock, and hold them there. Completely compress the stabilizer shock, pull it back out 1/8" and then clamp the stabilizer shock bracket down onto the tie rod.

## Step 3

Once proper adjustment is achieved, tighten and torque the u-bolt nuts to 25 ft. lbs. with a 9/16" socket to secure the bracket to the tie rod, and then torque the bolt attaching the shock to the bracket to 60 ft. lbs. with a 19mm wrench and socket.



 @RockJock4x4

 /RockJock4x4

 /RockJock4x4byJohnCurrie

 **ROCK  
JOCK** BY JOHN CURRIE

1592 Jenks Dr.  
Corona, Ca. 92878  
(714) 367-1580