



**CE-9033JK JK WRANGLER & UNLIMITED TOW BAR MOUNTING KIT
INSTALLATION INSTRUCTIONS & TECHNICAL MANUAL**



Fits

- 2007-2018 Jeep JK Wrangler & Unlimited

Kit Includes



- 1) CE-9033JKMP.....Tow Bar Mounting Plate
- 11) EE-3816CH8.....3/8"-24 x 1" long bolts
- 22) EE-37WSAEH.....3/8" flat washers
- 11) EE-38NS.....3/8"-24 nylock nuts
- 2) CE-9033B.....Tow Bar Mounting Fork Brackets
- 2) EE-11-225-Z.....Clevis Pins
- 2) EE-107-20.....Hairpin Clips

Required Tools

- Phillips Screwdriver
- C-clamps or Vice-Grips
- 3/8" Transfer Punch
- Hammer
- Drill - air or electric
- 3/16" drill bit
- 3/8" drill bit
- 3/8" ratchet w/ 9/16" socket
- 9/16" wrench
- Something to cut with! Sawzall, hack saw, etc.

⚠ CALIFORNIA PROP 65 WARNING

WARNING: These products can expose you to chemicals including Chromium, Lead, Lead Compounds, Nickel (Metallic), Nickel Compounds, Diisonyl and Di(2-ethylhexyl) Phthalates (DEHP)(DINP) which are known to the State of California to cause cancer or birth defects or other reproductive harm. **For more information, visit www.P65warnings.ca.gov**

Instructions



1) Remove all plastic attaching screws from stock plastic valance panel, then remove the panel from the vehicle.



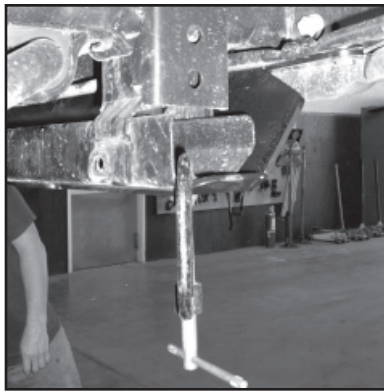
2) Fit new plate into position. Make sure the ends of the new plate wedge between the ends of the stock plastic bumper cover and the metal of the frame crossmember.



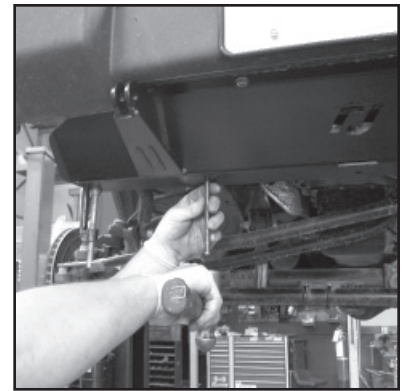
3) Initially mount the new plate to the bottom of the bumper by installing 4 of the 3/8"-24 x 1" bolts, washers top and bottom, and nylock nuts in the 4 pre-existing upper holes. Snug these bolts, but do not tighten.



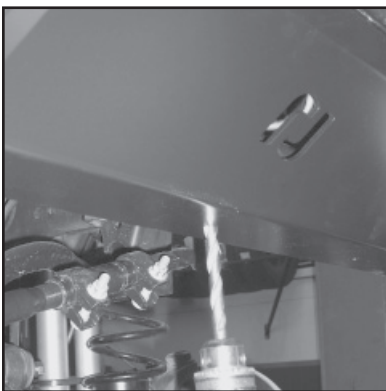
4) Before proceeding any further, center the new plate side to side on the vehicle using the bumper guards and the tow bar mounts on the plate as reference. Tighten the 4 top bolts.



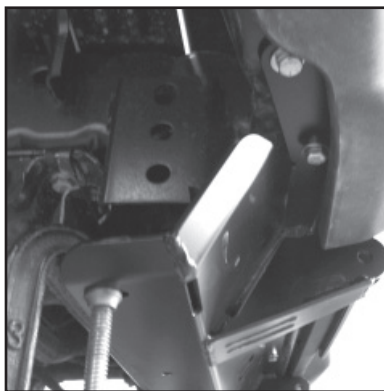
5) Next, with C-clamps or Vise-Grips, clamp the back of the plate up snugly to the bottom of the crossmember.



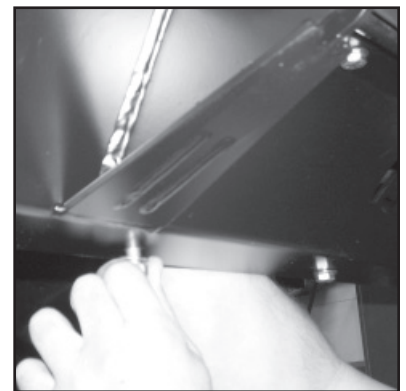
6) Using the plate as a template, and a 3/8" transfer punch, punch the 2 undrilled upper holes and all of the bottom holes.



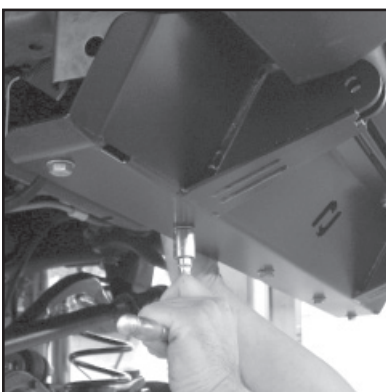
7) Now go back and drill the holes. Drill pilot holes first with a 3/16" bit, and then follow that up with a 3/8" bit.



8) Install the remaining 2 top bolts, using the 3/8"-24 x 1" bolts, a washer top and bottom, and the nylock nuts. Go ahead and tighten these bolts down.



9) Start several of the bottom bolts into their holes with washers and nuts, and then remove the C-clamp or Vise-Grips that you had the plate clamped to the crossmember with.




10) After all of the lower bolts are in their holes, go back and tighten all of the bolts with a 9/16" wrench on top and socket on the bottom.




11) Attach tow bar ends by inserting them into the bracket on the plate and affixing them in place with the clevis pins and hairpins. Tow bar ends must then be bolted to the tow bar of your choice.



12) For optimum performance your tow vehicle's hitch should allow for the tow bar to ride as level as possible. Always use safety chains or cables. This system will work with universal adjustable tow bars from Friedl, Draw-Tite, Valley, or Blue Ox.

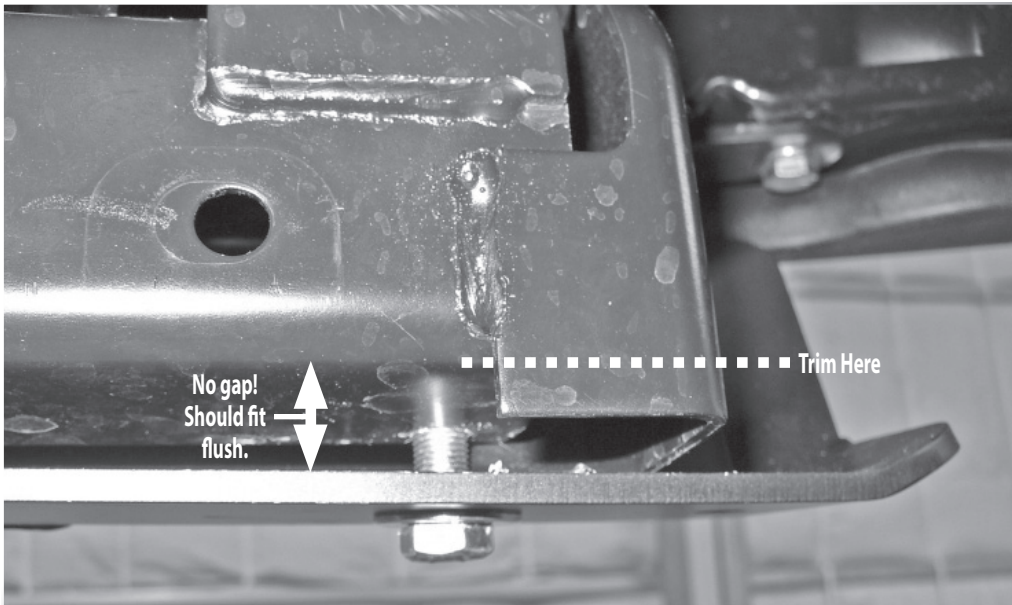
 @RockJock4x4

 /RockJock4x4

 /RockJock4x4byJohnCurrie

 **ROCK
JOCK** by JOHN CURRIE

1592 Jenks Dr.
Corona, Ca. 92878
(714) 367-1580



Update! We have found on 2010 and up models that the front crossmember has changed! As you can see in the photo, the vertical frame beam now overhangs the bottom of the crossmember that the tow bar plate mounts to. We have found that the easiest way to fix this is cut the bottom of the vertical beam off flush with the crossmember allowing the plate to fit flush against the crossmember. Also, the furthest 2 outboard holes in the plate - of the 5 that are intended to bolt to the crossmember - are not used on the 2010 and up because the crossmember has been shortened so there is nowhere for them to bolt to. Simply discard these 2 extra bolts.



